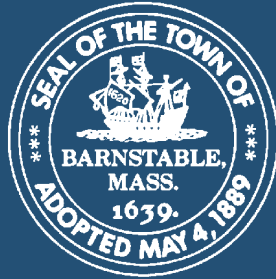


# Town of Barnstable Local Comprehensive Plan



Local Comprehensive Planning Committee

# Barnstable Local Comprehensive Plan

A local comprehensive plan defines a long-term vision for the community by anticipating and guiding the **rate of new development** and coordinating it with **capital facilities**. A comprehensive plan defines the **unique values** we seek to protect and encourages **balanced economic development**.

# Local Comprehensive Plans (CCC)

- Provides **guidance to the development community** on policies that might affect private development projects;
- Expresses the primary **values, concerns and desires** of the community;
- Establishes community **preferences and expectations** regarding future growth and development and resource protection;

# Local Comprehensive Plans (CCC)

- Provides a stronger supporting **framework and rationale** (and legal defense) for the adoption and amendment of zoning, fees, and other measures necessary to manage growth.
- Provides a wealth of data about **existing and expected conditions** within a town.
- Provides a platform to discuss planning issues that cross town lines and develop **efficient and effective multi-jurisdictional approaches** to address such issues.

# Local Comprehensive Plans (CCC Act)

- **Identify and protect areas** whose characteristics make them particularly vulnerable to adverse effects of development;
- **Preserve the social diversity** of Cape Cod by promoting fair affordable housing for low-income and moderate-income persons;
- Promote the **expansion of employment opportunities**;
- Implement a **balanced and sustainable economic** development strategy for Cape Cod capable of absorbing the effects of seasonal fluctuations in economic activity.

# Why is it important?

**Our mission is to protect the Town of Barnstable's quality of life and unique character, engage our citizens, and enact policies that respond to and anticipate the needs of our community.**

# Local Comprehensive Plans

- Provides a clearer picture of where additional study or special regulation is necessary to **manage complex issues and challenges**;
- Guide to **allocate capital funding** and prioritize town projects;
- Acts as a **resource guide** and can attract funding consistent with our municipal priorities.

# LCP Committee

- The **Local Comprehensive Planning Committee** has the “primary responsibility for development of the Local Comprehensive Plan”
- Appointed by the Town Manager
- Ratified by the Town Council

# LCP Content

- **Cape Cod Commission Act** and **Local Comprehensive Plan Regulations** establish required content

# CCC Plan Certification

- Minimum Criteria for Certification
- Consistency with CCC Regional Policy Plan

# CCC Regional Policy Plan

- Overarching framework for planning and land use on Cape Cod
- Updated in 2018 and 2021



# Why get CCC Certification?

- CCC Planning Tools
  - Districts of Critical Planning Concern
  - Development Agreements
  - Chapter H
  - Growth Incentive Zone
- Priority consideration for technical assistance

# LCP Required Plan Elements

- Required LCP content to meet minimum criteria of CCC Act

# Vision Statement



# Vision Statement

- Expresses the shared values of the community for future growth and development and resource protection.

# Existing Conditions + Data



# Existing Conditions & Data

- Inventory and overview of existing assets and conditions
- Guides discussion about future growth and development and resource protection

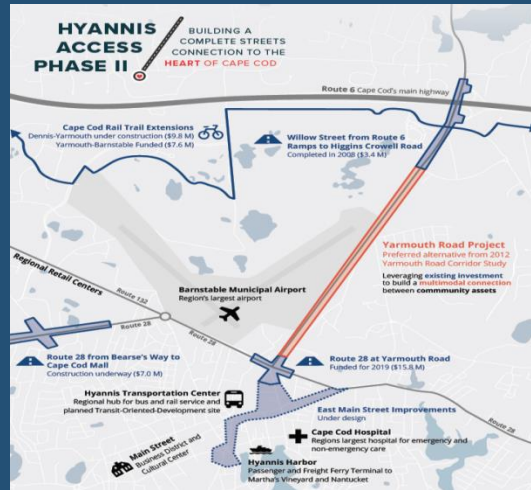
# Goals



# Goals

- Planning and land use goals
- How will key challenges identified by the town be addressed?

# Capital Facilities Plan



# Capital Facilities Plan

- Key capital facilities and infrastructure needed to accommodate anticipated future growth and development and to protect resources in the town

# Housing

## *Proposed Building Types*



*Accessory Dwelling Unit*



*Micro-units*



*Townhouse*



*Double Decker*



*Manor House*



*Walk-ups*



# Housing Production Plan

- How the town proposes to provide for the development of fair, low- and moderate- income affordable housing consistent with local needs, including an analysis of housing needs and proposed local housing supply targets.
- A Housing Production Plan (HPP)

# Targeted Action Plan

**MAKE IT  
HAPPEN.**

- Proposed new, or amendments to existing, **municipal development ordinances** intended to advance the goals and vision of the LCP;
- Town's **implementation schedule and budgeting for proposed capital facilities** projects that will support achieving the community's vision;
- **Implementation schedule for proposed private or non-municipal infrastructure** in or affecting the town, to the extent known by the town;
- **Implementation schedule for proposed actions intended to advance fair, low- and moderate-income affordable housing** consistent with local needs, including anticipated housing starts that meet identified supply targets;

# LCP Issue Areas

- The CCC regulations also direct towns to address the following topics in their LCPs, noting that some topics may be more relevant than others, and other topics may be addressed:

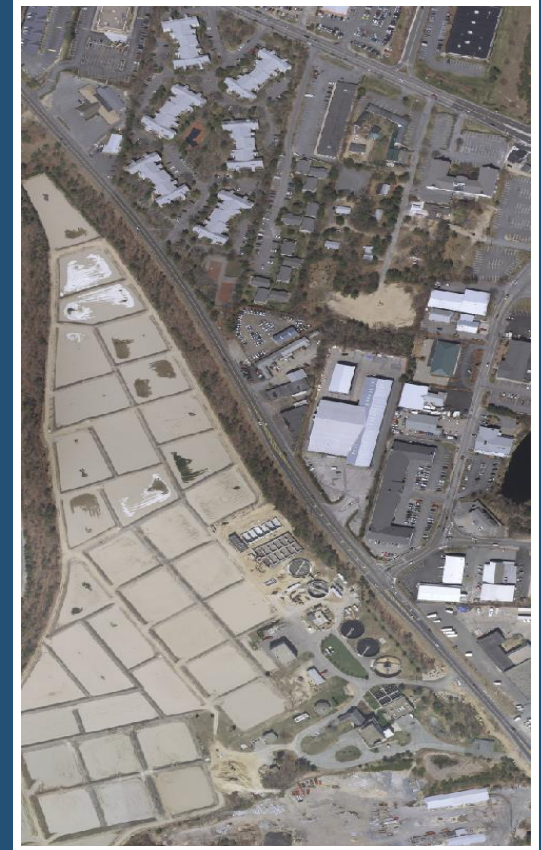
# Natural Systems

- Water Resources
- Ocean Resources
- Wetland Resources
- Wildlife & Plant Habitat
- Open Space



# Built Systems

- Community Design
- Coastal Resiliency
- Capital Facilities & Infrastructure
- Transportation
- Energy
- Waste Management
- Climate Mitigation



# Community Systems

- Cultural Heritage
- Economy
- Housing



Setting **performance measures** is a way to track progress towards achieving the vision and goals in the LCP. Examples of performance measures include:

PROTECTED  
HABITAT



DRINKING  
WATER



SIDEWALK  
NETWORK



COASTAL  
WATER



HISTORIC  
RESOURCES



ACTIVITY  
CENTERS



HIGH WAGE  
JOBS



HOUSING  
AFFORDABILITY



FLOODPLAIN  
DEVELOPMENT



# LCP Adoption

- The LCPC shall submit a final draft LCP to the Town Council for consideration and a vote to adopt
- After Town Council adoption, LCP is forwarded to Cape Cod Commission for certification that it is consistent with the RPP

# Town of Barnstable Local Comprehensive Plan

